

JG-INDUSTRIES

石 家 庄 精 工 水 泵 有 限 公 司

SHIJIAZHUANG SEIKO PUMPS CO.,LTD



品质稳固 专业承诺

博大精深——致力开拓与创新

Profound & Intensive Devote to Exploration and Innovation



精诚团结 科技创新

United with good faith, innovate with scientific technology

敬业务实 步步领先

Respect work and deal with concrete matters, lead step by step

力争上游 造福社会

Do all one can to go upward, benefit the society

勇于攀登 超越自我

Brave in climbing, surmount self



公司简介 ✓

石家庄精工水泵有限公司是国内大型工业泵专业制造企业，公司是集科研、设计、制造、销售、服务于一体的渣浆泵、污水泵、清水泵等大型综合性泵业公司，是国内渣浆泵行业的龙头企业。我公司是生产高效耐磨渣浆泵、脱硫泵、挖泥泵、抽砂泵、泥浆泵等杂质泵整机及配件的省级机械系统先进企业，市属骨干企业。公司下设铸造车间、机加工车间、锻焊车间、热处理车间、总装车间、检测性能实验室及成品库、备件库等。经过多年的市场开拓，我公司已经形成较为强大的市场辐射面。产品遍及全国30个省、市的电力、航道疏浚、煤炭、冶金、化工等行业；国际市场的占有份额不断提升，产品已出口北美、南美、欧洲、非洲、东南亚、中亚、北亚、东亚以及中东等五十多个国家和地区。

石家庄精工水泵有限公司在杂质泵的研制和应用方面有着多年的经验，在不断吸收国内外先进技术的基础上形成了性能范围覆盖面完善的产品系列。生产的渣浆泵系列主要有ZJ系列、ZJL系列、ZJD系列、MS系列、HS系列、LS系列；电厂浆液循环泵系列主要有TL/TLR系列、DT系列；船用泵系列：GS系列砂砾泵、WN系列挖泥泵；FGD辅助系统用泵有WFB系列、IH系列、IR系列、IHF系列、GC系列、D/DG系列等产品。

您的满意一直是我们的追求。公司非常注重服务与技术、服务与业务的结合，实现增值服务。随着企业的稳健发展，石家庄精工水泵有限公司建立和完善了销售服务网络，如今公司产品正高效的运行在诸如：国电电力、华电电力、大唐电力、首钢钢厂、鞍钢矿业、淮北矿业等全国重点工程项目和标志性建筑上。

石家庄精工水泵有限公司愿以优质的产品、完善的服务、良好的信誉为客户服务。愿与您共勉，真诚合作；为推动社会进步，创造市场繁荣而不懈努力。



Company Profile

Shijiazhuang Seiko Pumps Co. Limited is a professional manufacturing corporate of large domestic industrial pumps, the company is a research, design, manufacture, sales and service in one slurry pump, sewage pump, water pump, and other large-scale comprehensive pump company, is a leading corporate in slurry pump industry of domestic. The company is a provincial advanced corporate of mechanical systems to produce efficient wear-resistant slurry pump, desulphurization pump, dredging pump, gravel pump, mud pump and other impurities pump machine and accessories, is the city-owned backbone corporate. Companies consists of foundry workshop, machine workshop, forges welding workshop, heat treatment workshop, assembly workshop, the laboratory of detection performance and finished products, spare parts shop. After years of market development, the company has formed a strong market. Its products are popular among all places of China and they are exported to over fifty countries and districts, such as the south of America, the north of America, East Asia, West Asia, and Africa.

Shijiazhuang Seiko Pumps Co. Limited has many years of experience in the development and application of the impurities pump, The production of slurry pump series : ZJ series, ZJL series, ZJD Series, MS Series, HS Series, LS Series; The power plant slurry circulating pump series : TLR / TLR Series, DT Series; Marine pumps Series: GS series gravel pump, WN Series Dredging pump; FGD pumps: WFB series, IH Series, IR Series, IHF Series, GC Series and D / DG series.

Your satisfaction is our pursuit. Company has great emphasis on service and combination of technologies, services and business to achieve value-added services. Shijiazhuang Seiko Pumps Co. Limited has established and improved the sales and service network with the steady development, the company's products are now efficient operation on the national key projects and landmark buildings, such as: GD Power, Huadian Power, Datang Power, Shougang Steel, Anshan Iron and Steel Mining and Huaibei mining

Shijiazhuang Seiko Pumps Co. Limited willing to provide customers with high-quality products, perfect service, good reputation, willing to work with you to encourage each other, and cooperate in good faith, unremitting efforts to promote social progress and create market prosperity.

WN型挖泥泵

WN Dredging Pump

概述General

WN型系列挖泥泵是我公司运用各种先进的计算机辅助设计软件，针对我国江河湖海年久失修，疏浚、吹填工作迫在眉睫的现状而自行研制的一种新型泥浆泵。

该系列泥泵具有整体结构船用性好、挖泥性能优良、寿命长、效率高、轴封可靠、使用综合经济效益显著等特点，可完全满足挖泥船对泥泵的要求，每台套产品均通过中国船级社CCS船检。

目前，该系列泥泵已成功地为国内80m³/h、100m³/h、120m³/h、200m³/h绞吸式、350m³/h斗轮式和绞吸式、500m³/h绞吸式等挖泥船提供配套近百台套，为我国的长江流域、黄河流域、珠江三角洲、淮河流域等江河湖海、港口码头的疏浚清淤吹填做出了巨大贡献。2006年，我公司成功地为上海航道局13800m³/h耙吸船配套了国内最大的1000WN型挖泥泵，收到了良好的经济和社会效益。

WN type series dredge pump is my company use all kinds of advanced computer aided design software, according to China's rivers, lakes and seas beat up, dredging and reclamation work imminent situation was developed and a new type of mud pump.

This series of mud pump has the overall structure of Marine, dredging good performance, long service life, high efficiency, reliable shaft seal, the use of comprehensive economic benefit is remarkable characteristics, can completely meet the requirements of the dredger to dredge pump, each sets products through the China classification society ChuanJian CCS.

At present, this series of mud pump has successfully for the domestic 80 m³ / h, 100 m³ / h, 120 m³ / h, 200 m³ / h Hank suction, 350 m³ / h bucket wheel and ground suction, 500 m³ / h Hank suction dredger and provide supporting nearly sets, for our country the Yangtze river and the Yellow River basin, the pearl river delta, huai river valley, etc rivers and lakes

型号意义Notation

500 WN (D、Q)

D为低扬程，Q为水下泵
型号WN
泵吐出口直径(mm)

500 WN (D、Q)

D for low head, Q for submersible pump
Model
Discharge Diameter(mm)



WN型挖泥泵性能及结构特点

WN type dredge pump performance and structural features

整体结构船用性好 The overall structure Marine sex is good

结构简单可靠 Structure is simple, reliable

200WN-500WN型挖泥泵整体采用单泵壳、单级单吸悬臂卧式结构, 按与齿轮箱的联接方式均可提供两种典型结构, 即自带托架式与泵箱合一式。自带托架式润滑方式为脂润滑或稀油润滑。

600WN-1000WN型挖泥泵整体采用双泵壳、单级单吸悬臂卧式结构, 自带托架, 润滑方式为强制稀油润滑。双泵壳的安全性设计使护套一直可以使用至接近于磨穿, 并且当护套破裂时, 泵舱也不会进水。

200 wn - 500 wn type dredge pump integral by a single pump shell, single stage single suction cantilever horizontal structure, press and gear box of the connection way all can provide two kinds of typical structure, namely take bracket type and pump box and type. Own bracket type lubrication way as the grease lubrication or thin oil lubrication.

600 wn - 1000 wn type dredge pump overall adopts double pump shell, single stage single suction cantilever horizontal structure, bring their own bracket, lubrication way as the forced thin oil lubrication. Double pump shell the safety and reliability of the design makes sheath always can use to close to wear through, and when sheath rupture, pump room will not fill.

易于拆装, 维修方便 Easy to tear open outfit, easy maintenance

WN型挖泥泵采用了前拆式结构, 拆装简单, 以利维修; 同时针对各个零部件的结构特点, 配备专用拆装工具以利拆装。

叶轮与轴之间采用标准的四头梯形螺纹联接, 既能传递强大的扭矩, 又便于拆装; 同时, 在轴套处设有叶轮拆卸环, 以方便叶轮的拆卸。

WN type dredge pump before the demountable type structure, dismantling simple, and maintenance; At the same time in various parts of the structure characteristics, equipped with special dismantling device and dismantling.

Impeller and shaft between the standard four head trapezoidal thread connection, can transfer powerful torque, and easy to tear open outfit; At the same time, in the bush place with impeller remove ring, to facilitate the removal of the impeller.

挖泥性能优良 Dredging good performance

汽蚀性能好 Cavitation performance is good

WN型挖泥泵有良好的汽蚀性能可确保泥泵的吸上能力强, 同时可达到更大的挖深和更高的可吸入浓度。

WN type dredge pump has good cavitation performance can ensure that mud pump suction on ability, at the same time can achieve greater dig deep and higher concentration can be inhaled.

过流能力强, 适用性广 The flow ability, wide applicability

WN型挖泥泵叶轮流道宽度大, 泥泵自身良好的通过能力是对挖泥船性能范围很好的保证, 可连续抽送砾石或高塑粘土而不发生堵塞。

WN type dredge pump impeller passage width, mud pump itself through the ability is good to dredger performance range is very good guarantee, can continuous pumping gravel or high plastic clay and not happen jam.

性能曲线陡降 Performance curve steep drop

WN型挖泥泵的流量、扬程曲线陡降, 使得泥泵对排距的变化具有更强的适应性。

WN type dredging the capacity and head of the pump curve steep drop, make mud pump to the change of row spacing has a strong suitability.

可以实现泵性能的多种调配 Can realize a variety of pump performance deployment

WN型挖泥泵可以通过改变叶轮的转速，或改变泥泵叶轮直径的方式实现相同流量下泵扬程的改变。

WN type dredge pump by changing the impeller speed, or change the mud pump impeller diameter way realization the same flow pump head change.

耐磨性能好，过流零部件寿命长 Wear-resisting performance is good, over-current components long life

WN型挖泥泵的过流零部件中，叶轮、护套、前后护板（耐磨衬板）采用强抗磨合金铸铁，硬度不小于58HRC，在具有很强的耐冲击能力的同时，更具有高度的抗磨蚀性能；公司最近研制成功的A31材料，硬度可达70HRC。

WN type dredging pump flow parts, impeller, sheath, front and rear guard (wear-resisting backing board) to use strong antifriction alloy cast iron, hardness is not less than and HRC, in a very strong impact resistance ability at the same time, more with high resistance to abrasion performance; The company recently developed successful A31 materials, hardness can reach 70 HRC.

在产品的设计过程中充分考虑零部件相互之间使用寿命匹配，耐磨件更换周期基本相同，减少了维修及更换成本。

In the product design process fully consider between parts service life matching, wear a replacement cycle is basic and same, reduce the maintenance and replacement costs.

水力损失小，效率高，耗电量低 Hydraulic loss is small, high efficiency, low power consumption

由于采用先进的水力模型，泥泵的效率水平高。WN型泥泵的效率水平比进口泥泵平均高2-3个百分点。这样，在相同的产量时，可以获得更低的油耗。

With the advanced hydraulic model, mud pump efficiency level is high. WN type mud pump efficiency level than import mud pump mean higher 2-3%. So, in the same production, can obtain lower fuel consumption.

轴封可靠，无泄漏 Shaft seal and reliable, and no leakage

200WN-500WN型挖泥泵轴封采用机械密封或填料密封或机械密封加填料复合式密封。600WN-1000WN型挖泥泵轴封采用螺旋套L形橡胶密封装置，该密封装置由3道L型密封圈及1个带特殊螺纹的轴套组成。

200 wn - 500 wn type dredge pump shaft seal use of mechanical seal or packing seal or mechanical seal packing compound seal. 600 wn - 1000 wn type dredge pump shaft seals use screw sleeve L rubber sealing device, the sealing device is composed of three way L ring and a special thread with the sleeve composition.

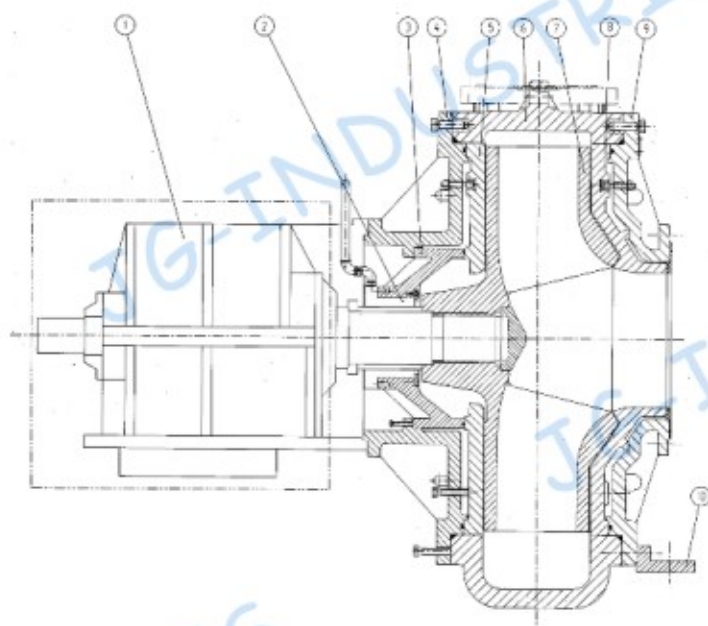
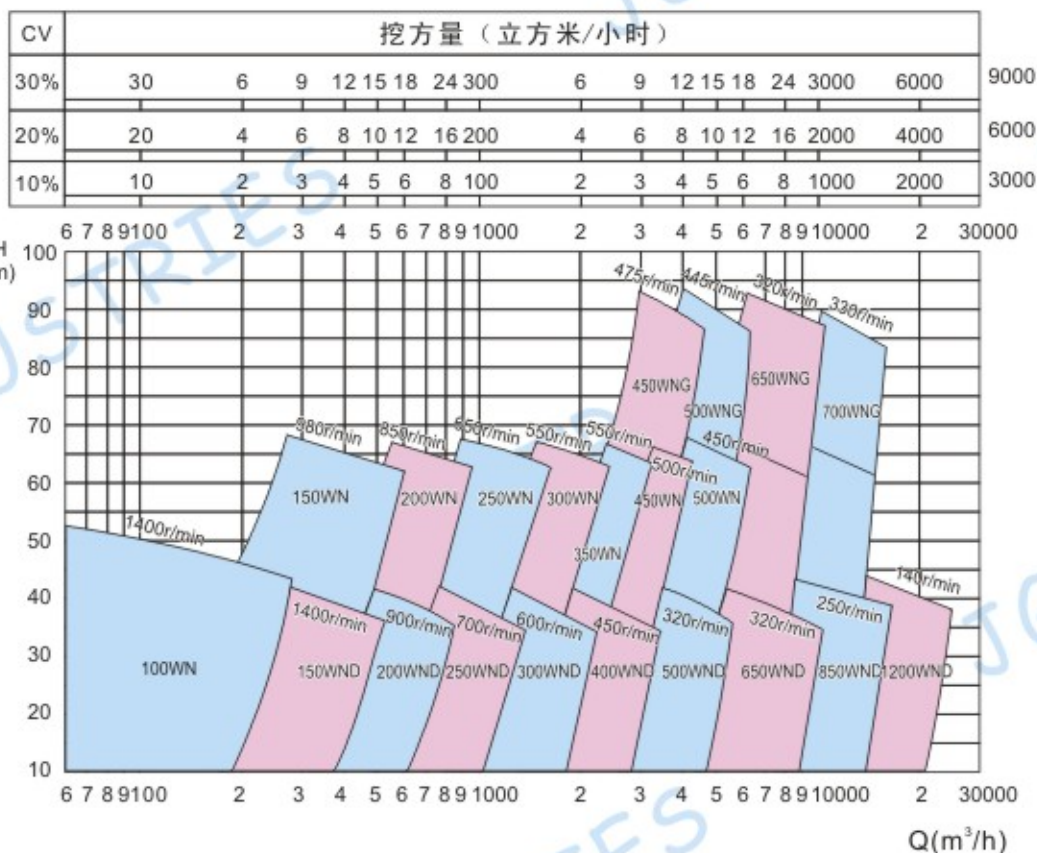
电动盘车机构，省时省力 Electric barring institutions, saves time and effort

700WN-1000WN型挖泥泵可配电动盘车机构，此机构可带动泵轴实现正反转旋转，拆装叶轮时不但节省时间，而且减轻了操作人员的工作强度。

700 wn - 1000 wn type dredge pump can match electric barring mechanism, this mechanism can drive the pump shaft realize positive & negative rotation, dismantling impeller when not only save time, but also alleviates the operator's working intensity.

WN 型挖泥泵型谱图及结构图

CONSTRUCTIONAL DRAWING FOR TYPE WN



- 1、齿轮箱或托架 Gear box or bracket
- 2、机械密封组件 Mechanical sealing assy
- 3、密封箱 Seal box
- 4、接合板 Joint plate
- 5、后护板 Frame plate
- 6、泵 体 Pump casing
- 7、叶 轮 Impeller
- 8、前护板 Cover plate
- 9、泵 盖 Pump cover
- 10、支 架 Support

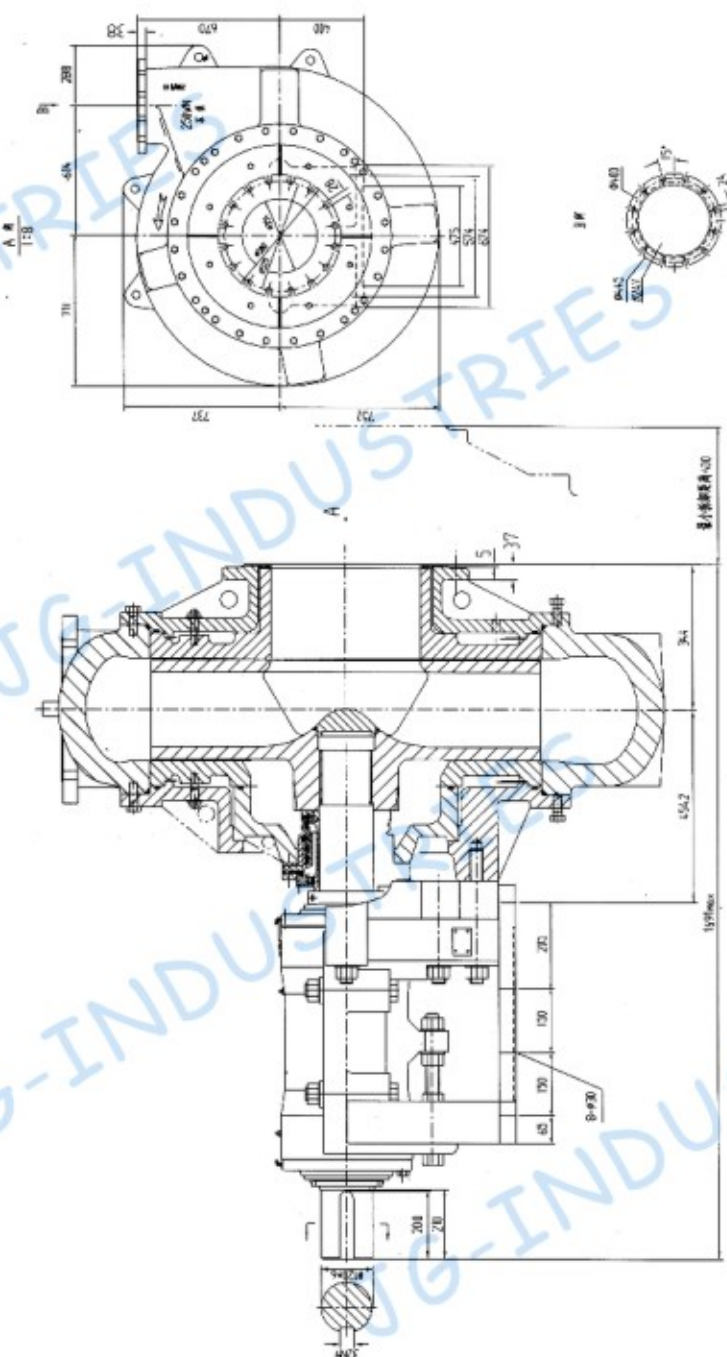
WN 系列挖泥泵基本参数

Basic Parameters of Series of WN Pump

型 号 Type	流 量 Capacity (m ³ /h)	扬 程 Head (m)	叶轮转速 Impeller Speed (r/min)	效 率 Efficiency (%)	进 口 直 径 Inlet Diameter (mm)	出 口 直 径 Outlet Diameter (mm)	汽蚀余量 (NPSH)r (m)	最大过流粒径 Max. Diameter of Flowed particle(mm)	
								五枚 Five Pieces	三枚 Three Pieces
100WN	180~250	25~45	100~1400	50~58	150	100	<3.5	50	82
150WWD	400~550	25~45	1200~1400	50~60	200	150	<4	76	127
150WN	500~700	40~65	800~980	68~71	200	150	<3.5	84	140
200WWD	600~800	20~40	700~900	60~65	250	200	<4.5	105	178
200WN	750~1000	40~65	700~850	70~72	250	200	<4	108	180
250WWD	950~1100	20~40	500~700	65~70	300	250	<4	132	220
250WN	1100~1300	40~65	500~650	70~74	350	250	<4.5	86	144
300WWD	1500~1800	20~40	400~600	65~68	350	300	<4.5	144	241
300WN	1800~2200	40~65	400~550	74~78	450	300	<4	144	241
350WN	2600~3000	40~65	400~550	74~78	450	350	<4	147	245
400WWD	2800~3200	20~40	400~550	74~78	450	400	<4.5	150	250
450WN	3200~3800	40~67	350~500	76~80	600	450	<4.5	125	254
450WNG	3200~3800	65~90	400~475	74~78	500	450	<4.5	125	250
500WWD	3600~4200	20~40	220~20	72~75	600	500	<4.5	200	330
500WN	4500~5500	40~65	350~450	78~80	650	500	<4.8	150	250
500WNG	4500~5500	65~90	405~445	76~80	600	500	<4.8	220	350
650WNG	8000~11000	60~90	325~390	81~85	700	650	<6	168	280
650WWD	6000~10000	20~40	250~320	83~85	750	650	<6	168	280
700WNG	10000~14000	60~85	280~330	85~87	800	700	<6	180	300
850WWD	12000~16000	23~35	180~250	84~87	950	850	<6	210	350
1200WWD	18000~22000	30~40	120~140	82~85	1400	1200	<5.5	320(4枚叶片)	

部分WN 型挖泥泵外形、安装尺寸图

Part of the WN type dredge pump appearance and installation size chart

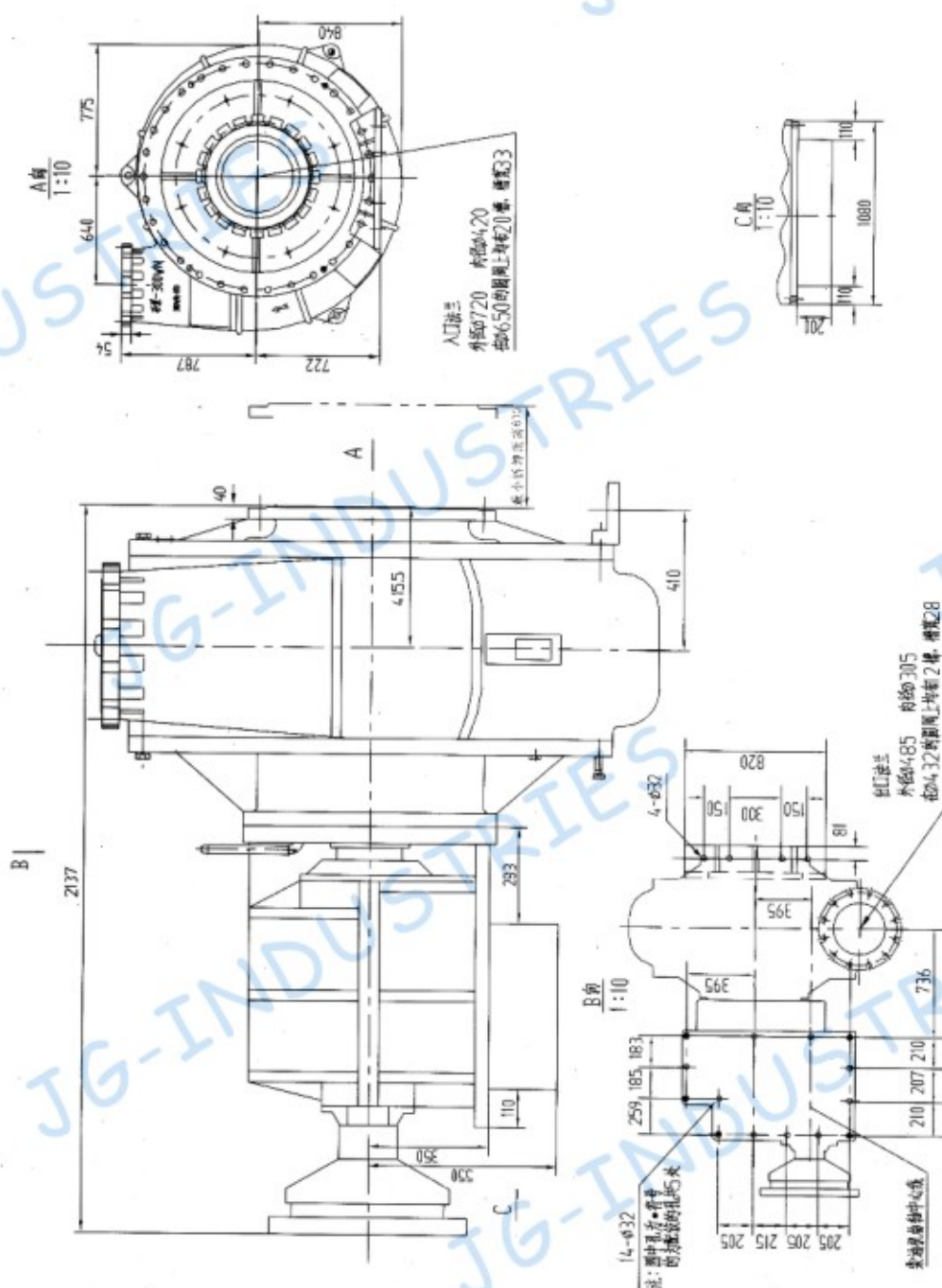


250WN 挖泥泵外形、安装尺寸图

250 WN type dredge pump appearance and installation size chart

部分WN 型挖泥泵外形、安装尺寸图

Part of the WN type dredge pump appearance and installation size chart

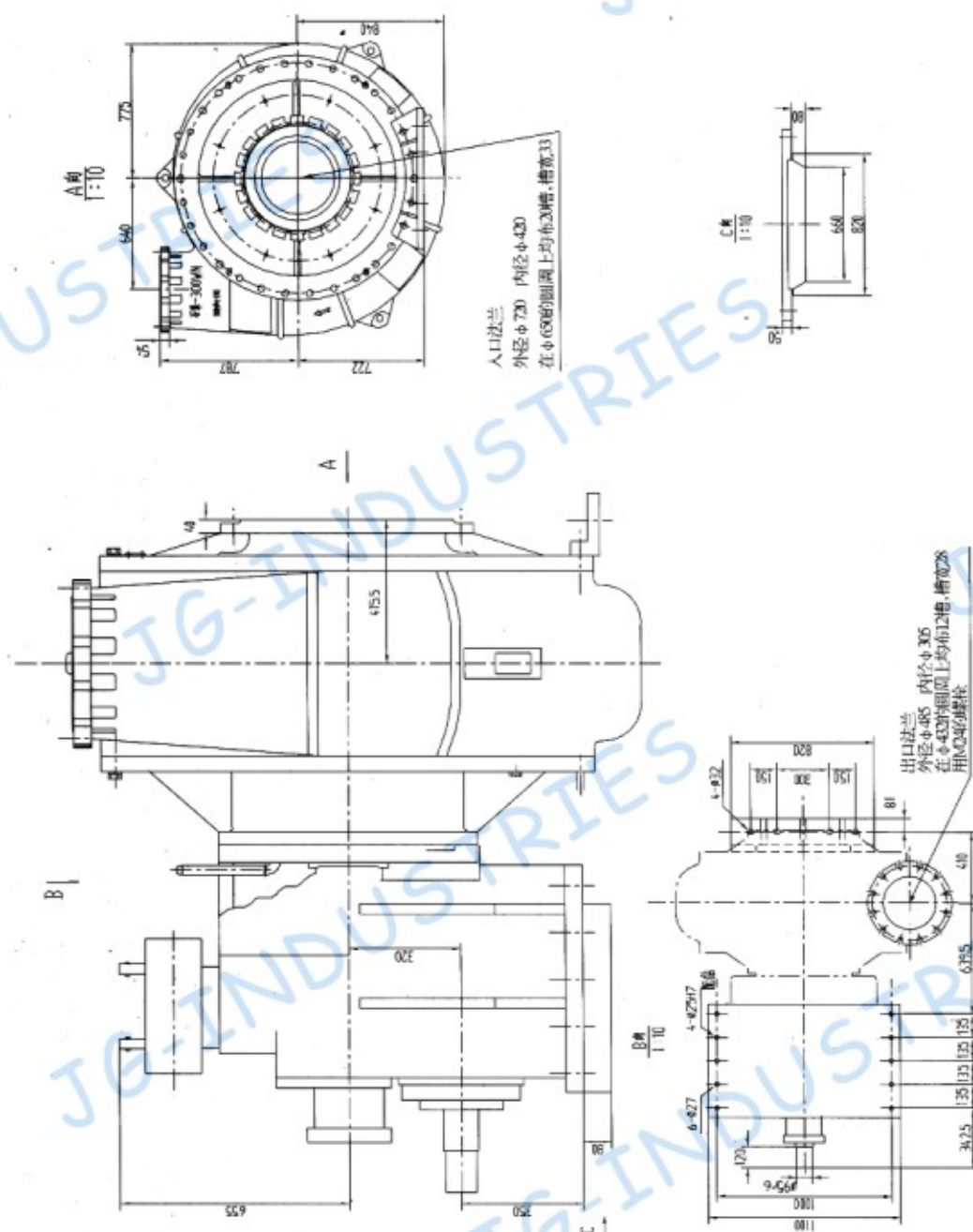


300WN 挖泥泵外形、安装尺寸图 (配JLH395齿轮箱)

300 WN type dredge pump appearance and installation size chart (With JLH395 gear box)

部分WN 型挖泥泵外形、安装尺寸图

Part of the WN type dredge pump appearance and installation size chart



300WN 挖泥泵外形、安装尺寸图 (配JL320-1齿轮箱)

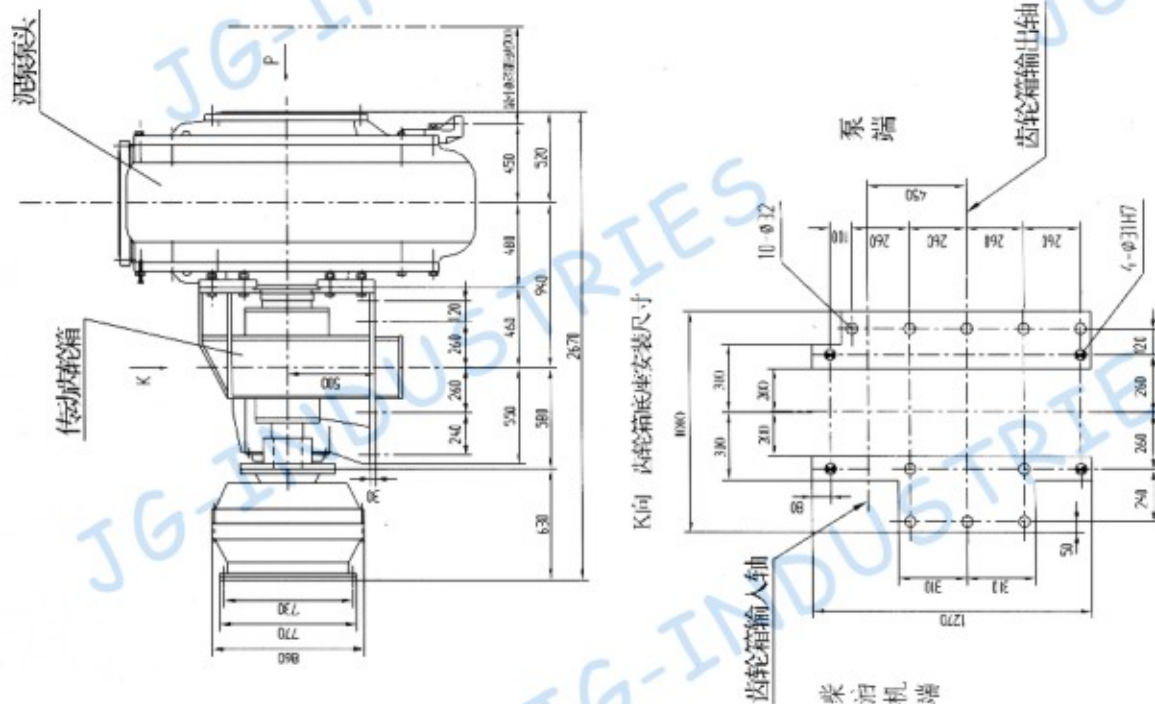
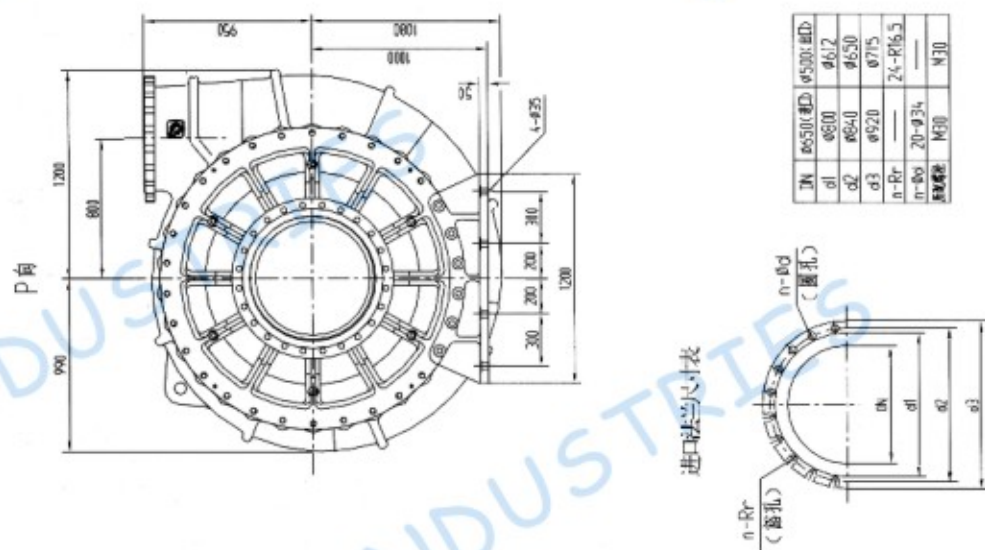
300 WN type dredge pump appearance and installation size chart (With JL320-1 gear box)

Part of the WN type dredge pump appearance and installation size chart



部分WN 型挖泥泵外形、安装尺寸图

Part of the WN type dredge pump appearance and installation size chart





海/聚/精/工

Sea poly Seiko

Morality and Credit all over the world

德/信/天/下

石家庄精工水泵有限公司

SHIJIAZHUANG SEIKO PUMPS CO.,LTD

地址：中国石家庄市和平东路94号

电话：0311-86079818

传真：0311-86983818

邮编：050000

邮箱：jgpumps@163.com

网址：www.jg-industries.com

<http://blsbkj.cn.alibaba.com>

Addr: No.94 He Ping Eastern-Road,
Shijiazhuang City, China.

Tel: +86-311-86079818

Fax: +86-311-86983818

P.C.: 050000

E-mail: cn.seikopumps@gmail.com

Web: www.jg-industries.com

<http://blsbkj.cn.alibaba.com>